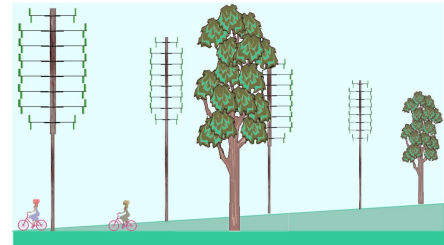


Wind-Do



FAQ

4. Are there similar products/services being developed or on the market already? If so, what sets your idea apart?

Many compare our concept with small wind product, which is a misunderstanding of our offer. We intend to be an alternative to giant wind turbines and all other electricity sources.

Small and medium wind turbine had an efficiency disadvantage beside giant one due to their blades speed. We have solved that problem, it's the subject of our third patent: "Continuous and modulate stimulation of wind turbine". Details are available.

Large wind turbine producers (GE, Vesta...) offer a low wind version of their engines. Where a standard 2 MW wind turbine harness about 5,000 square meters of wind, they now offer new versions that sweep 8 or 10,000 sq.m. a significative 60 to 100% increase of capacity. The standard 20 KW modular wind turbine of Wind-Do harness 25 sq.m. of wind. Our lower wind option engine will harness 125 sq.m. of wind, a 500% increase that is physically out of reach for giant machine.

- Another significative advantage of Wind-Do modular wind farm is the delivery of peak power. Large wind farm deliver their full potential with winds of 12 meters per second and above, which they can reach only one or two days per month. Our wind farm will deliver their peak power with winds from 9 to 11 m/s, which appears generally more than twice often then wind above 12 m/s. As this occurrence is offset the large wind turbines one, it may be used to partly counterbalance their random availability.*